



ProKitchen Series 18" x 72" Stainless Steel Wall Mounted Shelf

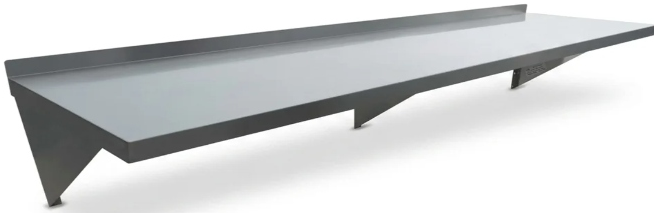
(Model: PKWMS18-4)

★★★★★ (4.7/5)

[Buy Now](#)

WARRANTY

1 Year Warranty



SPECIAL FEATURES

- ✓ **Wall Storage**
Wall mounted design supports organized storage of kitchen supplies in commercial kitchen environments.
- ✓ **Heavy Load**
451 lb top shelf capacity supports storage of heavy kitchen equipment and ingredients.
- ✓ **Easy Installation**
Predrilled screw holes and included support brackets support wall mounting installation.
- ✓ **Stainless Build**
Constructed with stainless steel material and 18 gauge thickness for storage applications.
- ✓ **NSF Certified**
NSF Certified construction supports commercial kitchen hygiene and compliance requirements.
- ✓ **Warranty Coverage**
It includes a 1-year warranty by the manufacturer for manufacturing coverage.



PRODUCT OVERVIEW

The ProKitchen Series Wall Mounted Shelf is a commercial kitchen storage unit designed for restaurants, hotels, and food preparation areas. It is used for storing kitchen utensils, ingredients, and equipment in wall-mounted storage systems within commercial kitchen environments.

The unit is constructed using stainless steel material with a silver finish and 18 gauge thickness. It features a knock down (KD) design that supports structured assembly and installation in commercial kitchen storage applications.

This wall mounted shelf has dimensions of 72" (L) x 18" (W) x 13" (H) with a product weight of 28.6 lb. It supports a top shelf capacity of 451 lb, suitable for storing heavy-duty kitchen supplies and equipment in organized storage layouts.

It includes waterproof construction, no sharp edges and burr-free finishing, and predrilled screw holes for mounting. Support brackets are included. The unit is NSF Certified and includes a 1-year warranty by the manufacturer.

CERTIFICATIONS

NSF Certified

SPECIFICATION

ATTRIBUTE	VALUE	ATTRIBUTE	VALUE
Type	Wall Mounted Shelf	Series	ProKitchen Series
Selling Unit	1/Each	Color	Silver
Material	Stainless Steel	Country of Origin	China
Product Weight	28.6 pound	Product Depth	18 inch
Product Height	13 inch	Product length	72 inch
Included	Support Brackets Included	Installation Type	Wall Mounted
Gauge	18 Gauge	Design	Knock Down (KD) Design
Top Shelf Capacity	451 lbs	Features	Waterproof, No Sharp Edges & Burr Free, Predrilled Screw Holes for Mounting